

DINNER MENU

ディナーメニュー

Japanese Meal Set
Burger & Stacks

・ LOUNGE ・

Hakuba

ラウンジ白馬



POPCORN

CHICKEN CARTILAGE

ポップコーンチキン軟骨

\$78



*Popcorn
Chicken Cartilage
Sweet Chili Mayo*

SAVORY

BITES

POPCORN CHICKEN CARTILAGE

雞軟骨爆谷桶

\$78



YUZU HONEY CHICKEN WINGS

柚子蜜糖雞翼

\$88



WASABI MAYO GYOZA

山葵忌廉醬餃子

\$78



TRUFFLE FRIES

黑松露薯條

\$78



SWEET POTATO FRIES

蕃薯條

\$68



10% Service Charge

Mentaiko Tamagoyaki

メンタイコタマゴヤキ



\$118

*Freshly
Made
Everyday*

LIGHT

DISHES



**MENTAIKO
TAMAGOYAKI**

明太子日式蛋卷

\$118



**CRAB TARTARE W/
FRENCH BREAD**

牛油果蟹肉他他配法包

\$108



EDAMAME

枝豆

\$68



**COUCH CLUB
SALAD BOWL**

Couch Club 沙律碗

\$118



**BLACK TRUFFLE
CAULIFLOWER**

黑松露焗椰菜花

\$118

10% Service Charge



**TRUFFLE
MUSHROOM
RIGATONI**

黑松露雜菇粗管通粉

\$118

SUKIYAKI

BEEF FRY UDON

壽喜燒牛脊肉炒烏冬

\$128



CARBS

AROUND THE WORLD



**USDA BEEF
STEAK DONBURI**

肉眼溫泉蛋丼飯

\$148

**CRAB FAT
MAC & CHEESE**

蟹黃芝士通心粉

\$98



**SPICY CRAB MEAT
ANGEL HAIR**

蟹肉炒天使麵

\$110



10% Service Charge

JUMBO

DONBURI SET

MENTAIKO TAMAGOYAKI
TORCHED HAMACHI
MISO EGGPLANT
PUMPKIN
SWEET POTATO WITH KONJAC

BEEF STEAK DONBURI SET

肉眼温泉蛋定食

\$218

GINGER PORK BELLY DONBURI SET

生薑五花腩溫泉蛋定食

\$188

CHICKEN NANBAN DONBURI SET

南蠻炸雞溫泉蛋定食

\$168

10% Service Charge

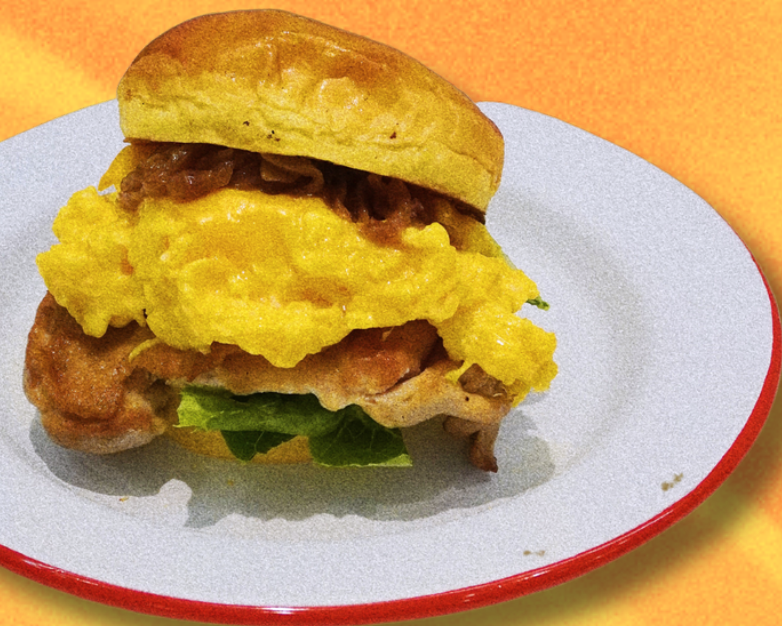
FIG & BEEF BURGER

メンタイコタマゴヤキ



*USDA Prime Angus
Beef Patty
Fresh Fig*

\$168



BURGER

W/ FRIES

+\$15 *Sweet Potato Fries*
+\$15 轉蕃薯條

**SCRAMBLED EGG
CHICKEN BURGER
W/ FRIES**

雞扒滑蛋漢堡配薯條

\$148

**FISH BURGER
W/ FRIES**

魚柳漢堡配薯條

\$158

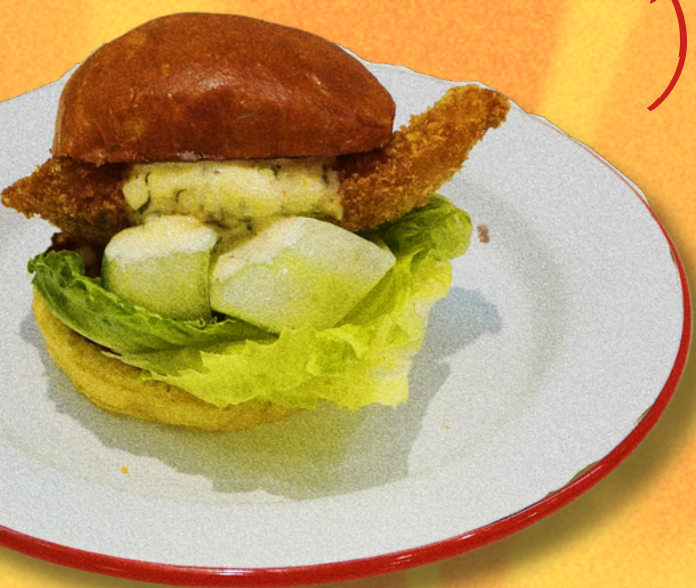


FIG BEEF

BURGER W/ FRIES

無花果牛肉漢堡配薯條

\$168



10% Service Charge

KARAAAGE

CHICKEN PANCAKE

唐揚げチキンパンケーキ

\$108



*Poached Egg
Pancake
Fried Chicken*

TWISTED STACK

KARAAGE
FRIED CHICKEN PANCAKE
唐揚炸雞楓糖漿班戟

\$108



**MIXED BERRIES
STACK PANCAKE**

雜莓雙層班戟
+\$15 雪糕 Ice Cream

\$98

**HOMEMADE
SHRIMP CAKE
BENEDICT**

自家製章魚炸蝦波波

\$118



10% Service Charge



Today is

COMFORT

FOOD DAY!